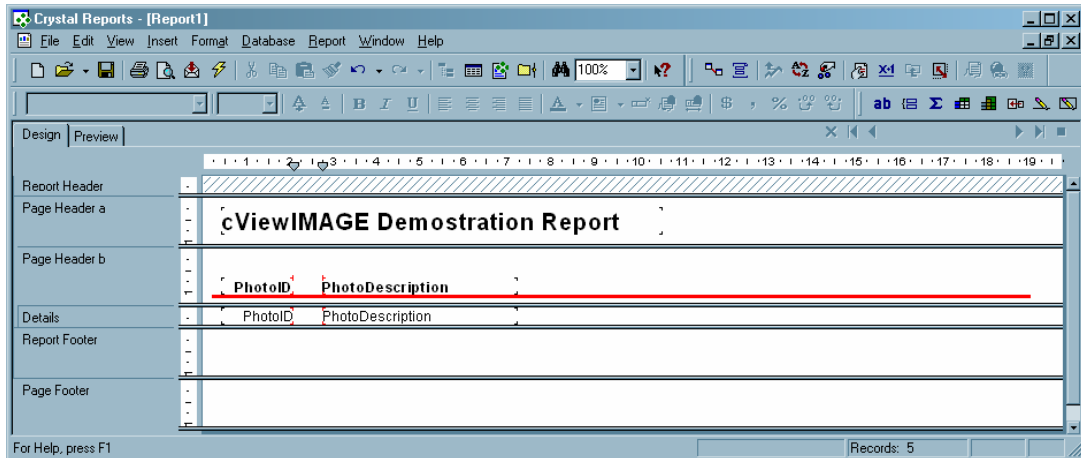


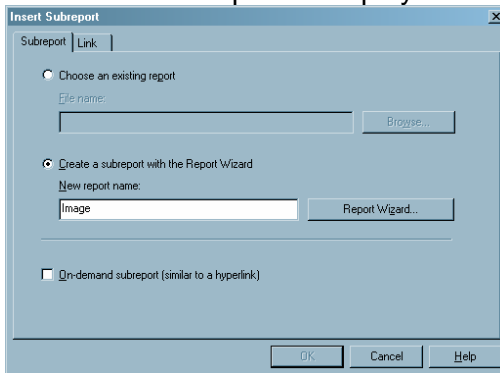
# cViewIMAGE.SingleIMAGE Instructions

To Use cViewIMAGE to display images in your report, proceed as follows.

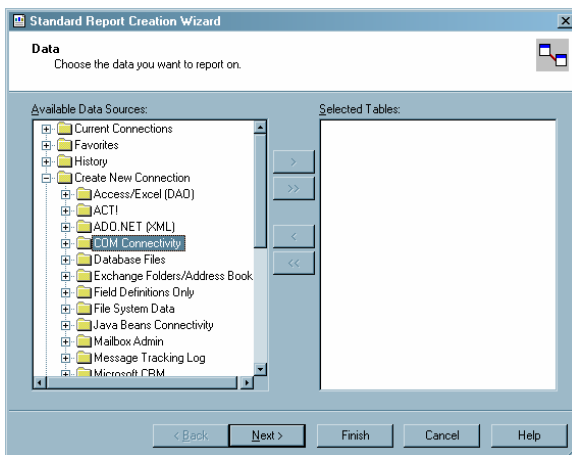
1. Create a main report to select your database and display the fields in your database table.



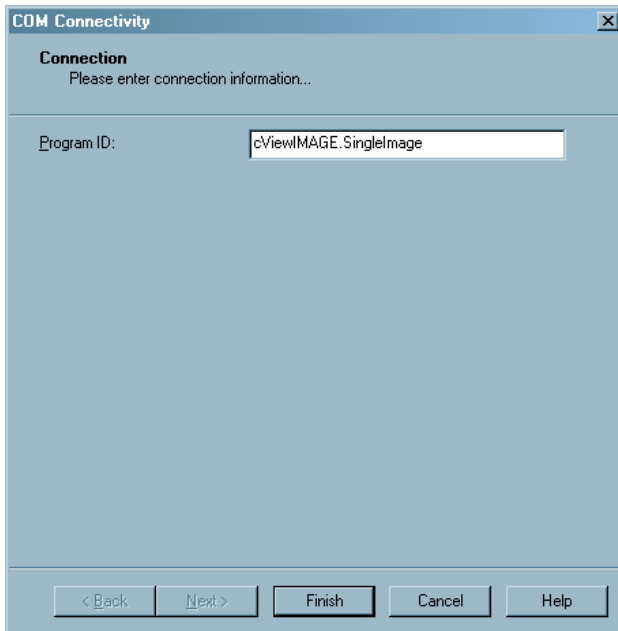
2. Insert a subreport to display the image.



3. Select the COM data source as your source database

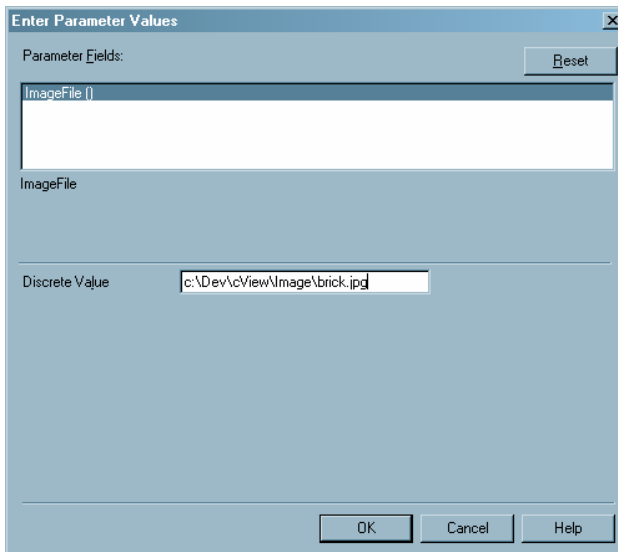


4. Enter cViewIMAGE.SingleImage as the Program ID. Click Finish and select the cViewIMAGE table for your report.



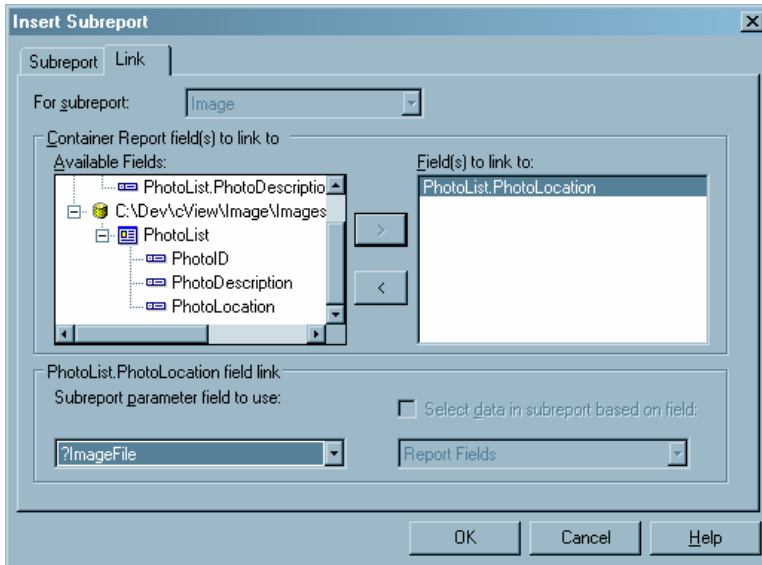
The screenshot shows a dialog box titled "COM Connectivity" with a close button (X) in the top right corner. Below the title bar, the text "Connection" is displayed, followed by the instruction "Please enter connection information...". A text input field labeled "Program ID:" contains the text "cViewIMAGE.SingleImage". At the bottom of the dialog, there are five buttons: "< Back", "Next >", "Finish", "Cancel", and "Help". The "Finish" button is highlighted with a darker border.

5. Enter a valid image file path as the Image file name parameter. Click Finish once you have entered a file name.

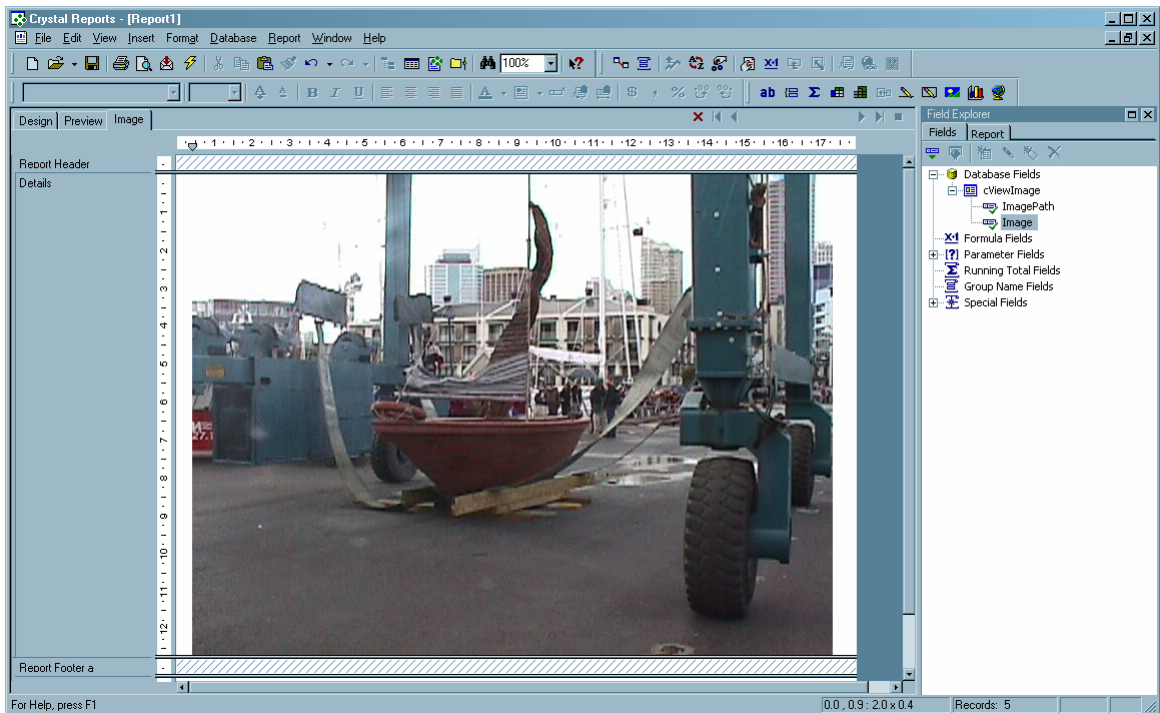


The screenshot shows a dialog box titled "Enter Parameter Values" with a close button (X) in the top right corner. Below the title bar, the text "Parameter Fields:" is displayed, followed by a "Reset" button. A text input field labeled "ImageFile {}" is empty. Below this field, the text "ImageFile" is displayed. A text input field labeled "Discrete Value" contains the text "c:\Dev\cView\Image\brick.jpg". At the bottom of the dialog, there are three buttons: "OK", "Cancel", and "Help". The "OK" button is highlighted with a darker border.

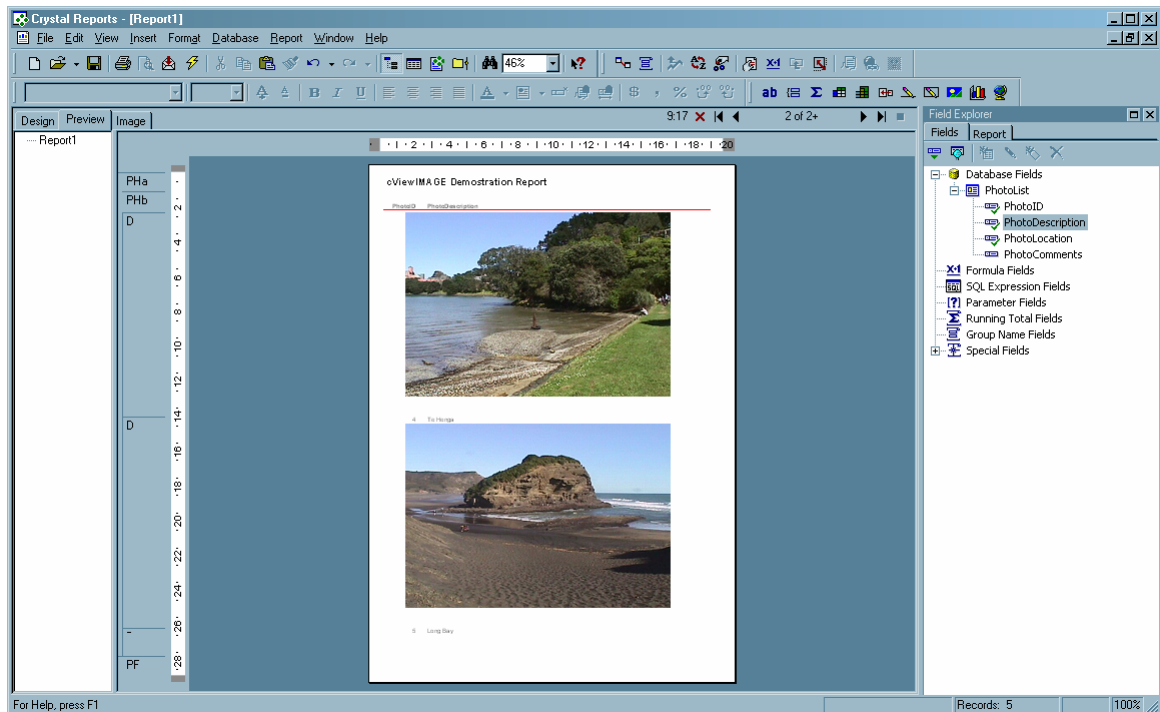
- Specify the subreport links. The “Field to link to” is the field or formula that has the fully qualified image file path. It is IMPORTANT to link to the ?ImageFile parameter field in the subreport. Use the combo box to select the ?ImageFile parameter. Then Click OK and place your subreport in the main report.



- Place the Image Field in your subreport. Format the subreport and main report so it all fits together nicely. (The picture below is of a Brick boat launched in Auckland, New Zealand on April 1, 2002)



8. Preview your report and the subreport will display the image for each record. (This shows page two of the report, with a picture of Chelsea Bay and the black sand of Te Henga beach on the West Coast near Auckland).



9. This example uses Crystal Reports version 10 as the report designer. Version 9.0 looks exactly the same. Crystal Reports 8.5 has the COM data driver listed under "More Data Sources", "Active Data", "COM Data". This is not available in Crystal Reports 8.0 or earlier.

